



MEASURE L & U BOND UPDATE

June 15, 2021



Measure L & U – Overview

- Measure L
 - Project Updates
 - Program Schedule
- Measure U
 - Project Updates
 - Program Schedule

Measure L – Project Updates

Projects Complete

- Shade Structures
 - Piedmont

Projects in Progress

- Shade Structures
 - Morrill
- Library Reception Desk
 - Brooktree, Noble, Majestic Way, Summerdale, Vinci Park, and Piedmont
- Security Camera Project – All Sites
- Exterior Lunch Tables
 - Brooktree, Laneview, Majestic Way, Noble, Summerdale, Piedmont, and Morrill

Measure L – Project Updates

Bids Received

- Painting of Shade Structure at NB, RK, SD, and VP
 - Bid on May 28, 2021, received four (4) bids
 - Satellite Painting \$24,000.00
 - Cabrera Painting \$44,862.00
 - H.B. Restoration \$57,500.00
 - Color New Co. \$64,000.00
 - The low bidder is under the project budget
 - Staff will make a recommendation to award at the June 15, 2021 Board meeting

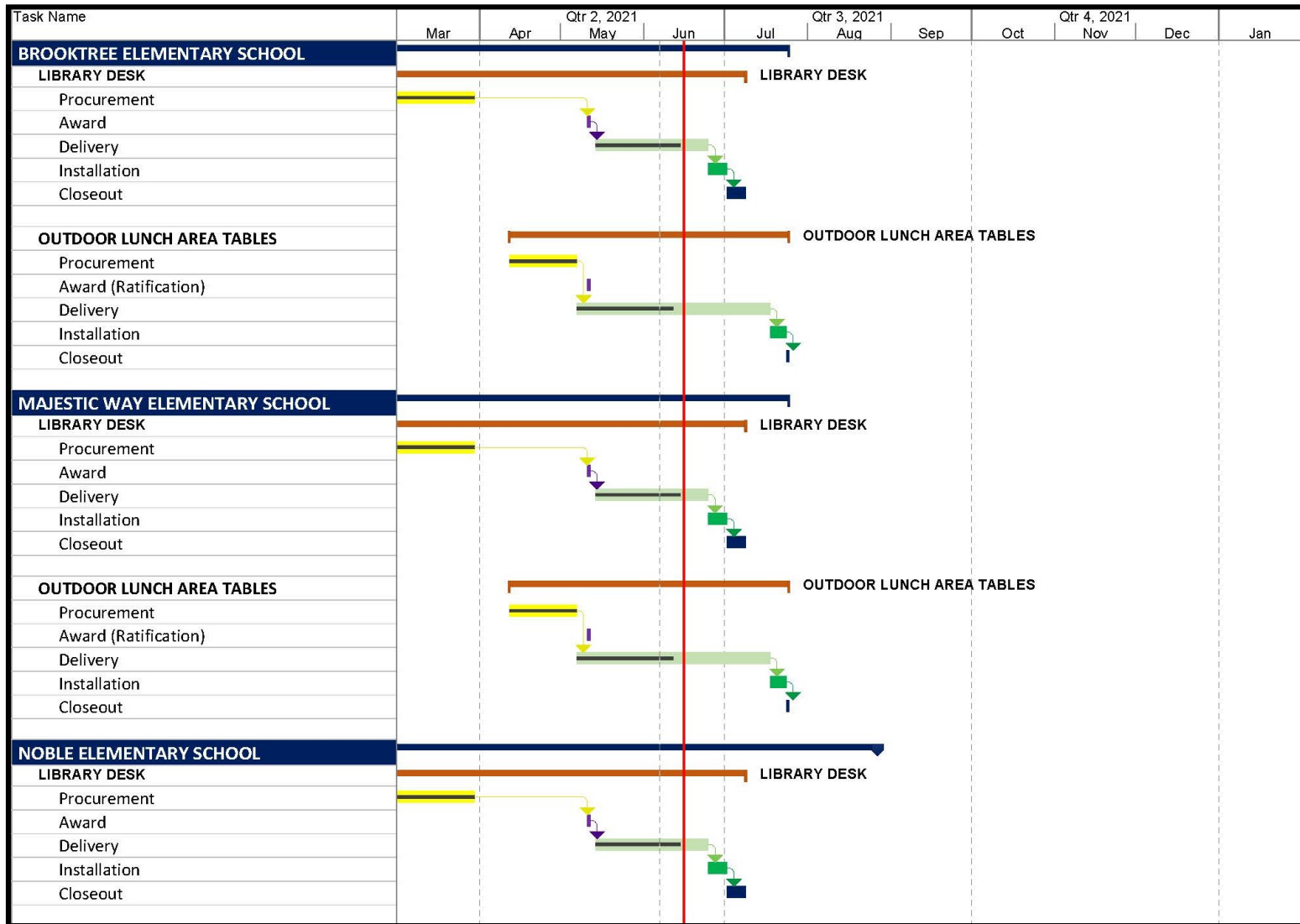
Bidding/Procurement

- Vinci Park - FIS Canopy

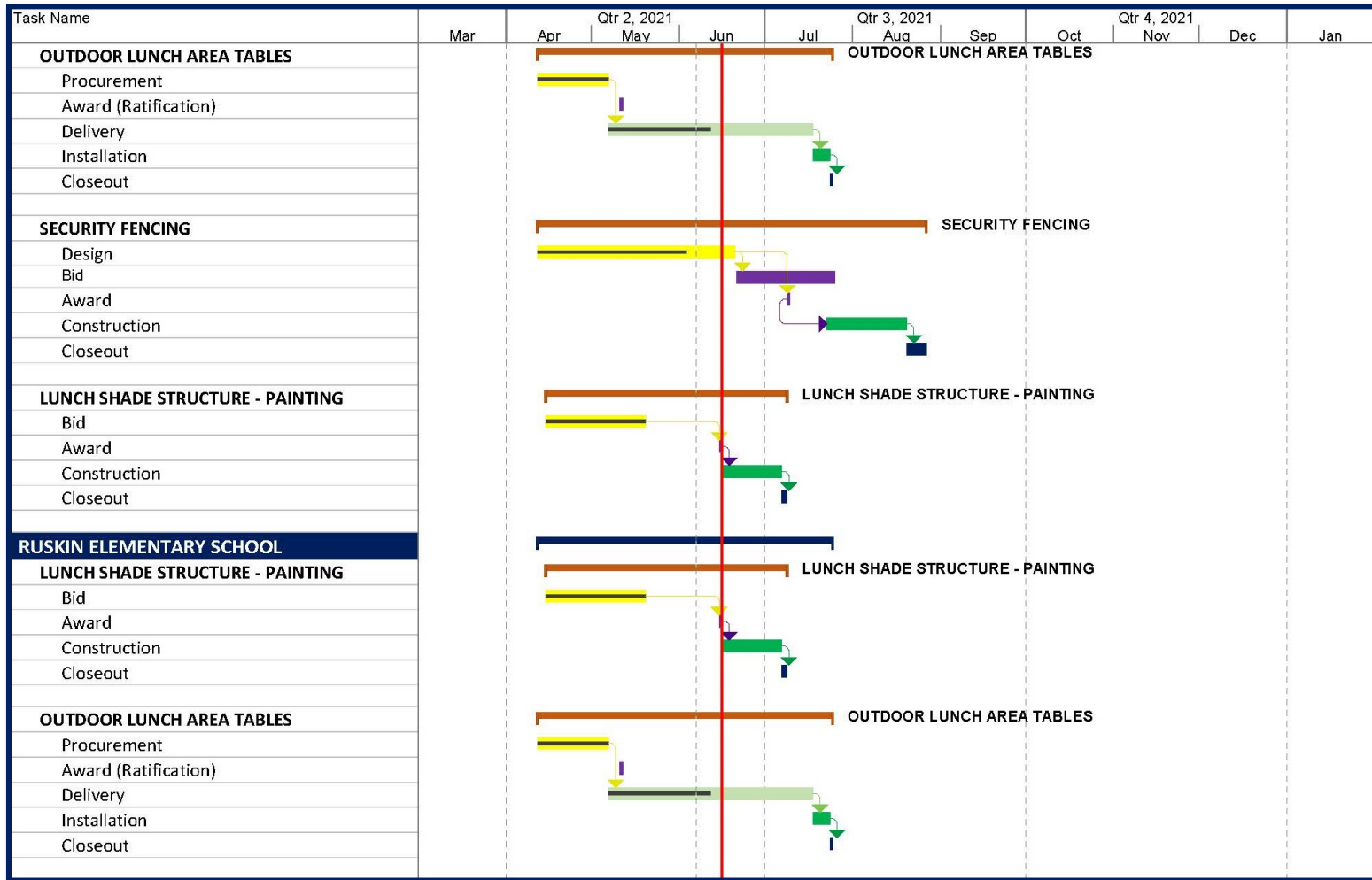
Projects in Design

- Security Fencing - Noble

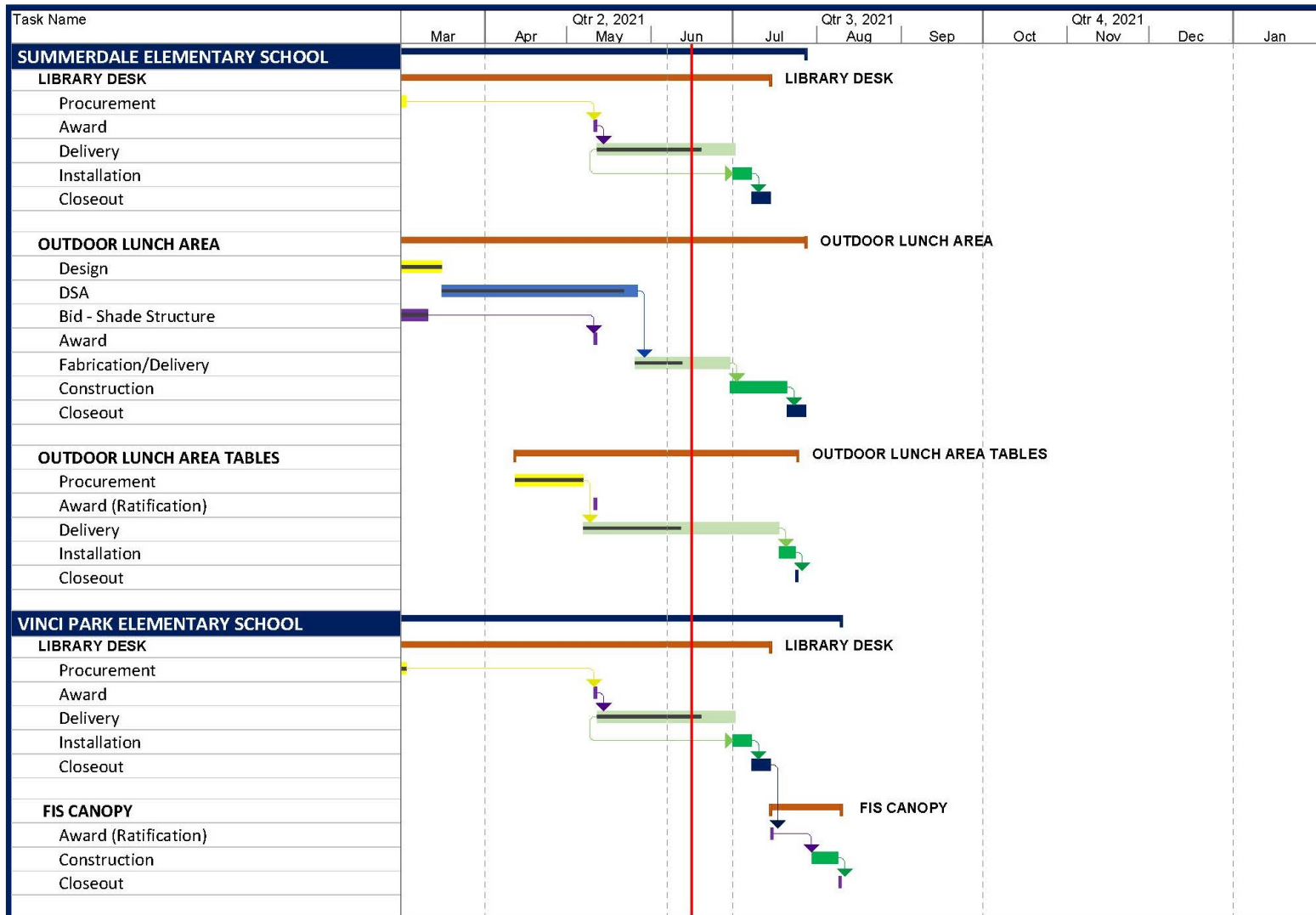
Measure L – Program Schedule



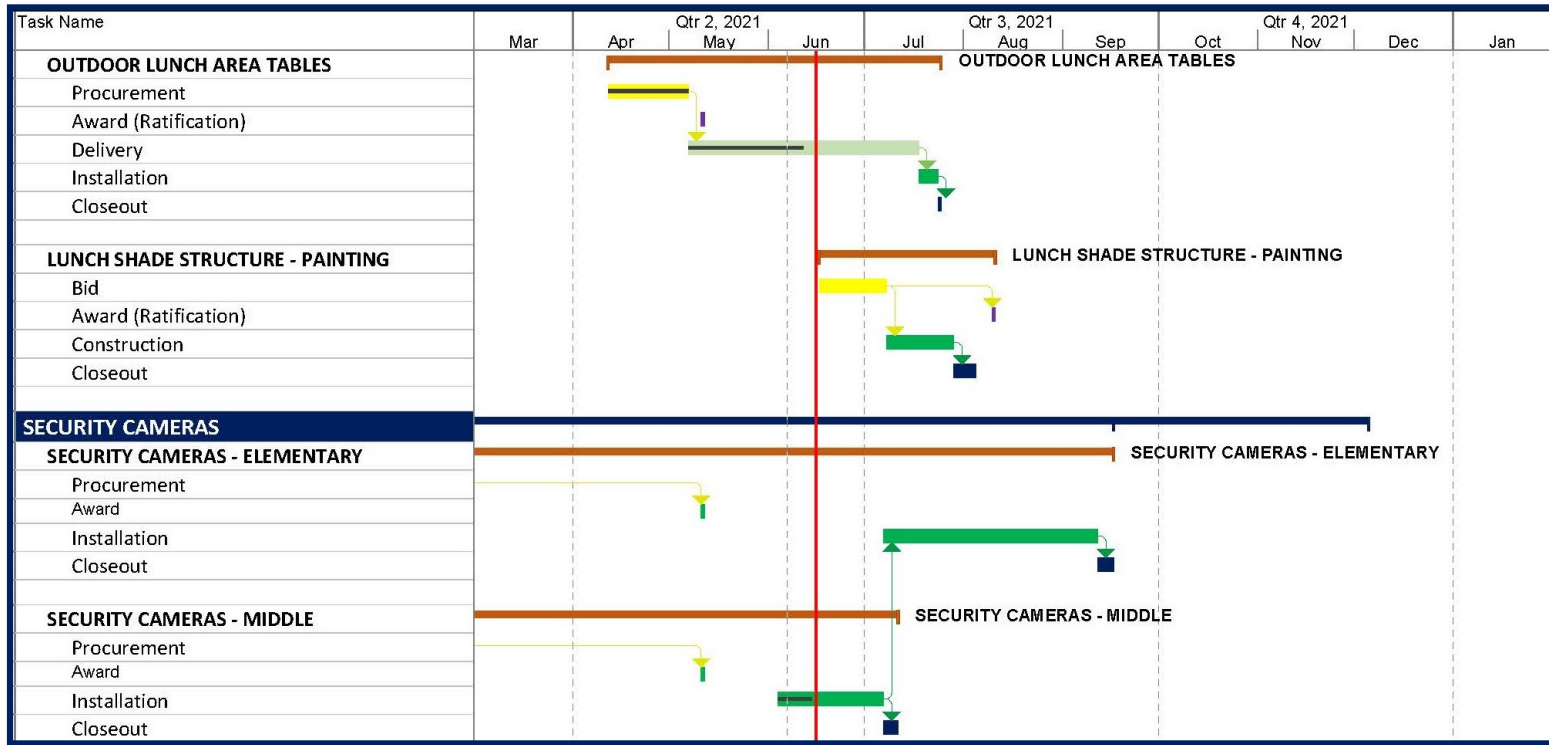
Measure L – Program Schedule



Measure L – Program Schedule



Measure L – Program Schedule



Measure U – Project Updates

Projects in Progress

- Library Shelving
 - Morrill
 - Sierramont
- Library Improvements
 - Brooktree
 - Noble
 - Majestic Way
 - Summerdale
 - Vinci Park
 - Piedmont
 - Sierramont

Measure U – Project Updates

Bids Received

- Painting of Shade Structure at CW and LV
 - Bid on May 28, 2021, received three (3) bids
 - Satellite Painting \$10,800.00
 - Cabrera Painting \$17,700.00
 - Color New Co. \$44,000.00
 - The low bidder is under the project budget
 - Staff will make a recommendation to award at the June 15, 2021 Board meeting
- Library Improvement project
 - Demolition
 - Casework
 - Tack board & Bulletin Boards
 - Painting
 - Electrical

Measure U – Project Updates

Bids Received (continued)

- Paving and Site Preparation for Lunch Shade Structure at Cherrywood
 - Bid on May 27, 2021, received seven (7) bids
 - Silicon Valley Paving \$134,000.00
 - Galeb Paving \$142,700.00
 - Tri-Valley Excavating \$143,238.00
 - Beals Martin \$166,704.00
 - Guerra Construction \$209,700.00
 - Lewis & Tibbetts \$240,000.00
 - 101 Builders \$307,101.00
 - The low bidder is under the project budget
 - Staff will make a recommendation to award at the June 15, 2021 Board meeting

Measure U – Project Updates

Bids Received (continued)

- Paving and Site Preparation for Lunch Shade Structure at Laneview
 - Bid on May 27, 2021, received four (4) bids
 - Silicon Valley Paving \$240,000.00
 - Guerra Construction \$264,470.00
 - 101 Builders \$433,000.00
 - Lewis & Tibbetts \$440,000.00
 - The low bidder is under the project budget
 - Staff will make a recommendation to award at the June 15, 2021 Board meeting
- Playground Equipment at Cherrywood

Measure U – Project Updates

Bidding/Procurement

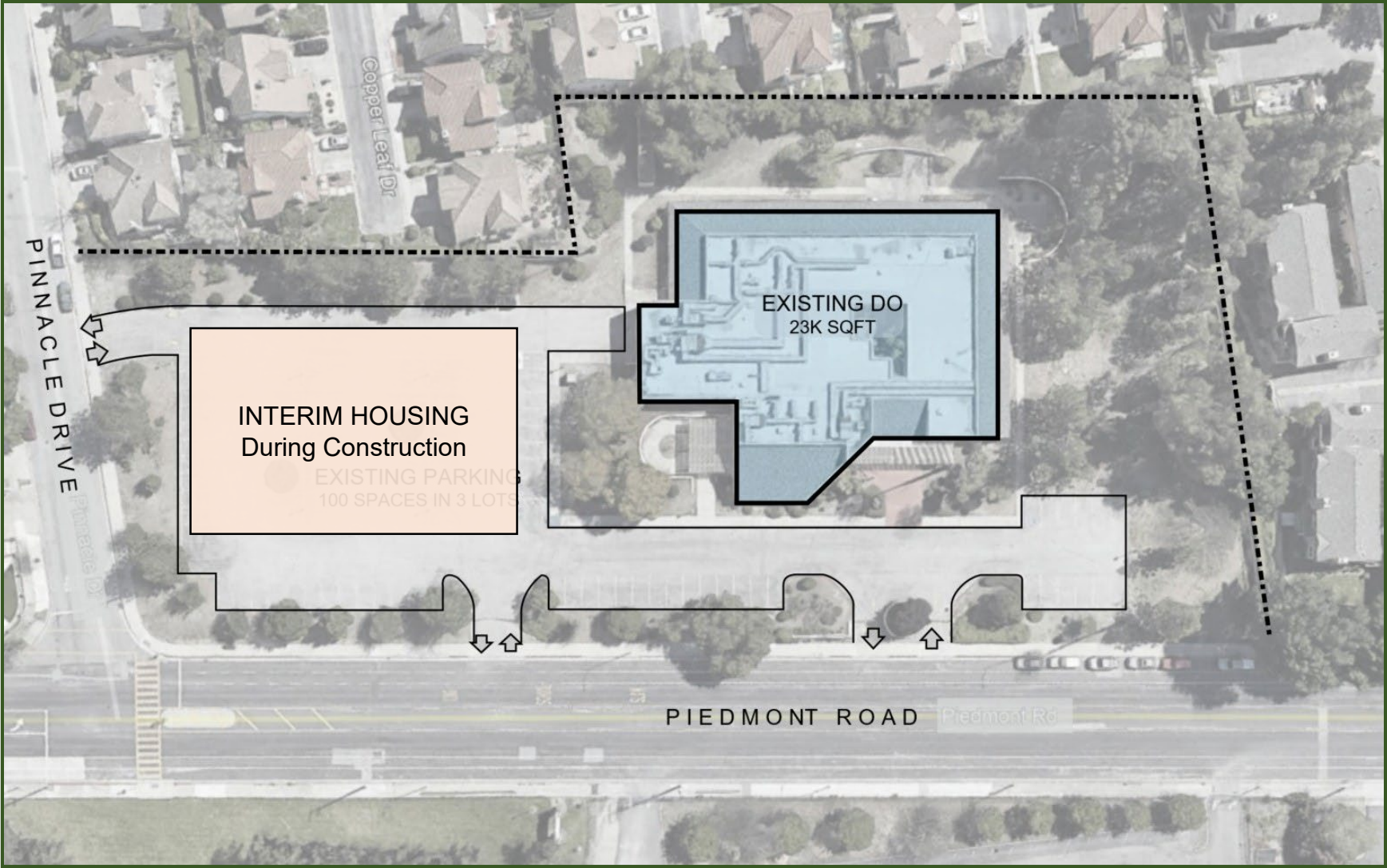
- Installation of irrigation backflow preventers at eight (8) Elementary Schools

Projects in Design

- Piedmont Gym
- Exterior Door Numbers and Signage at Elementary Schools – Phase 1
- LED Lighting Replacement at Laneview, Ruskin, Summerdale, and Portables

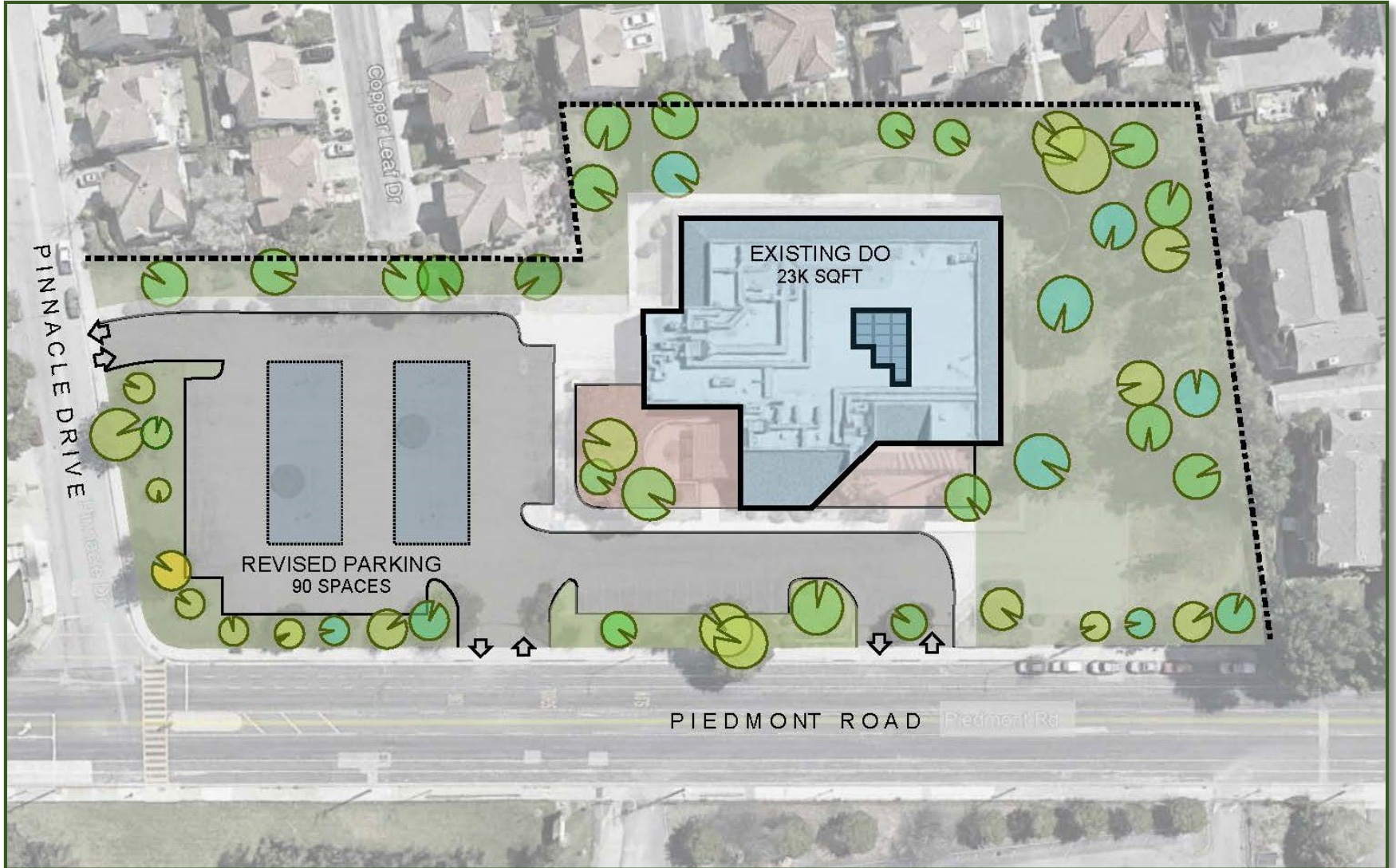
Measure U – Project Updates

OPTION A – Renovation of Existing District Office



Measure U – Project Updates

OPTION A – Renovation of Existing District Office



Measure U – Project Updates

OPTION A – Renovation of Existing District Office

TOTAL PROJECT COSTS

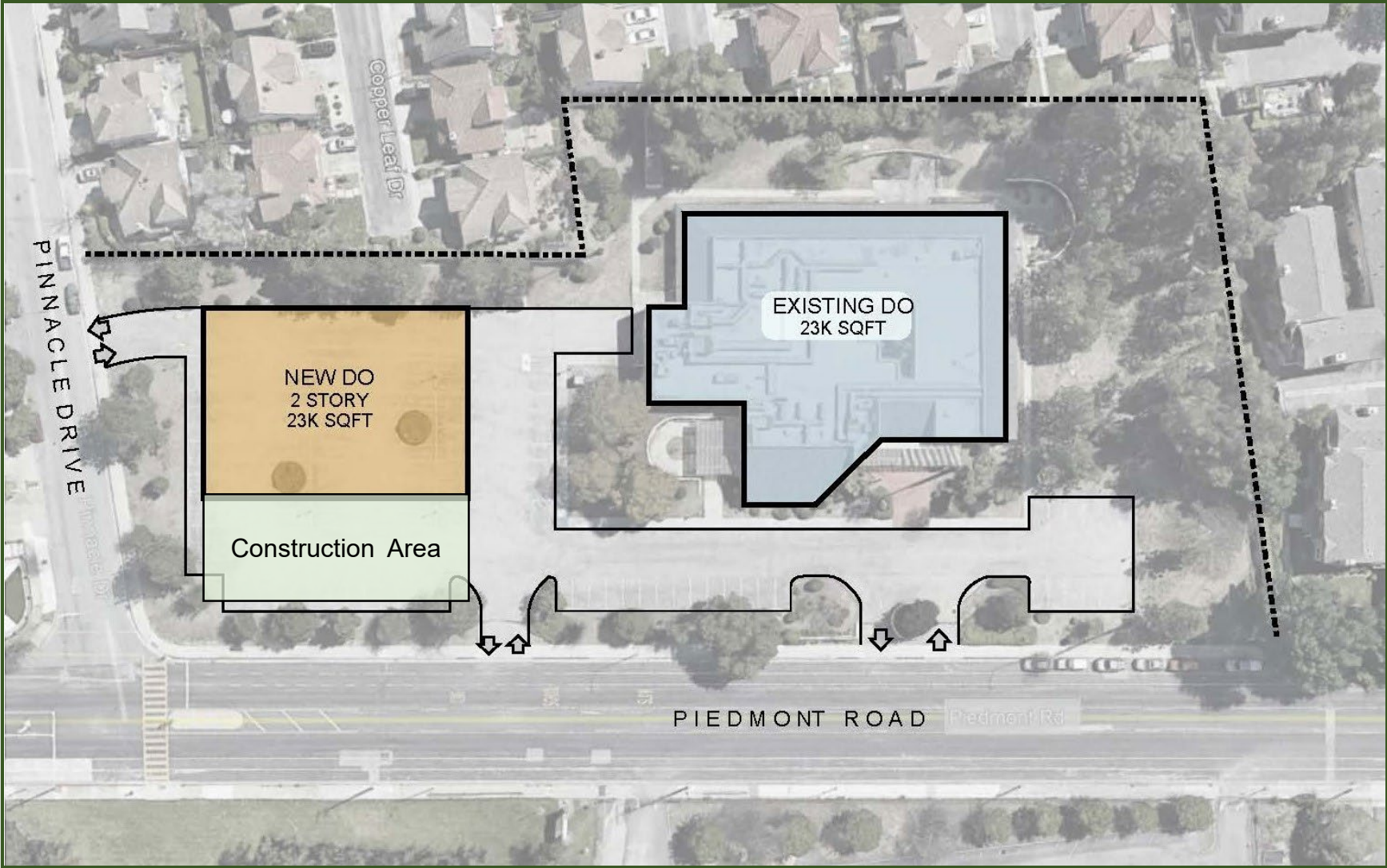
Program Estimate

June 15, 2021

<i>Description</i>	<i>Qty</i>	<i>SF</i>	<i>Cost/SF</i>	<i>Total Cost</i>
Site Work District Office	22,500	sf	\$349.82	\$1,345,353 \$7,871,004
Total Construction Cost	22,500	sf	\$409.62	\$9,216,357
Change Order Contingency	5.00%			\$460,818
Interim Housing				\$866,420
Soft Costs	25.00%			\$2,635,899
Moving				\$103,000
Furniture				\$257,500
Escalation (2 years @ 5% per year)	10.25%			\$1,387,849
Total Project Costs				\$14,927,844

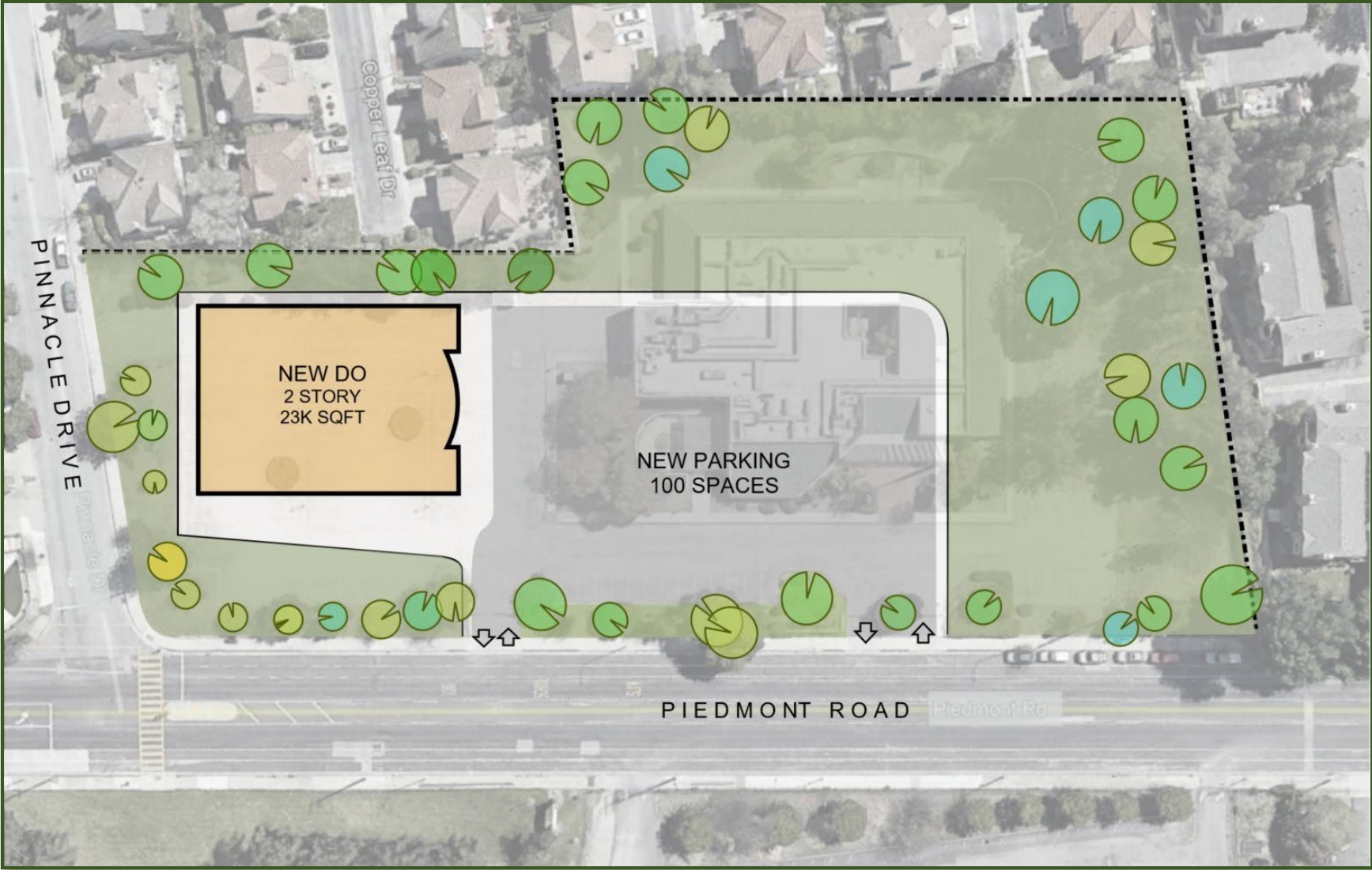
Measure U – Project Updates

OPTION B – New District Office Building on Existing Site



Measure U – Project Updates

OPTION B – New District Office Building on Existing Site



Measure U – Project Updates

OPTION B – New District Office on Existing Site

TOTAL PROJECT COSTS

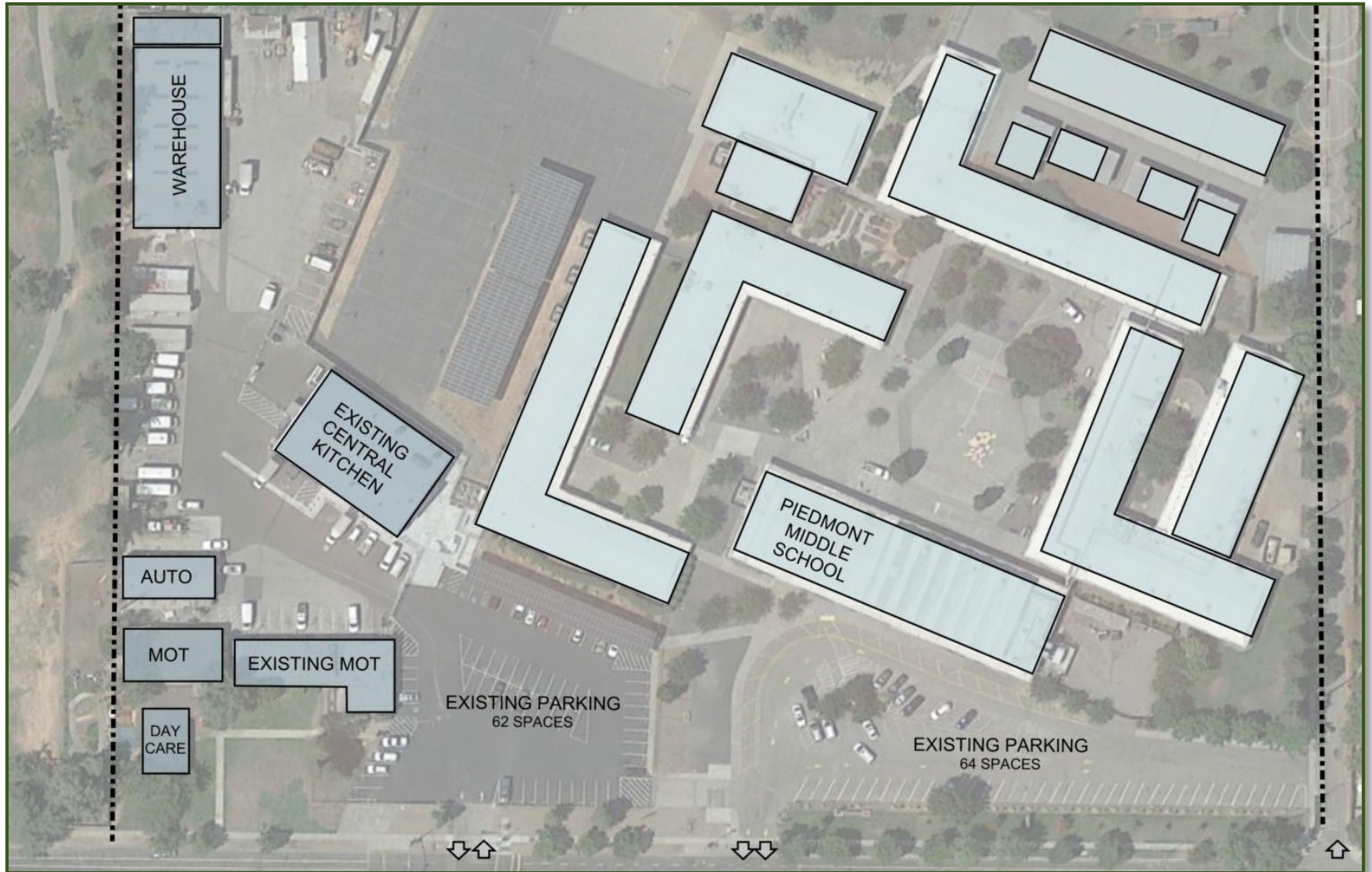
Program Estimate

June 15, 2021

<i>Description</i>	<i>Qty</i>	<i>SF</i>	<i>Cost/SF</i>	<i>Total Cost</i>
Site Work				\$2,658,339
District Office	22,500	sf	\$569.05	\$12,803,625
Total Construction Cost	22,500	sf	\$687.20	\$15,461,964
Change Order Contingency	5.00%			\$773,098.21
Interim Housing				\$0
Soft Costs	25.00%			\$4,058,766
Moving				\$51,500
Furniture				\$257,500
Escalation (2 years @ 5% per year)	10.25%			\$2,111,790
Total Project Costs				\$22,714,618

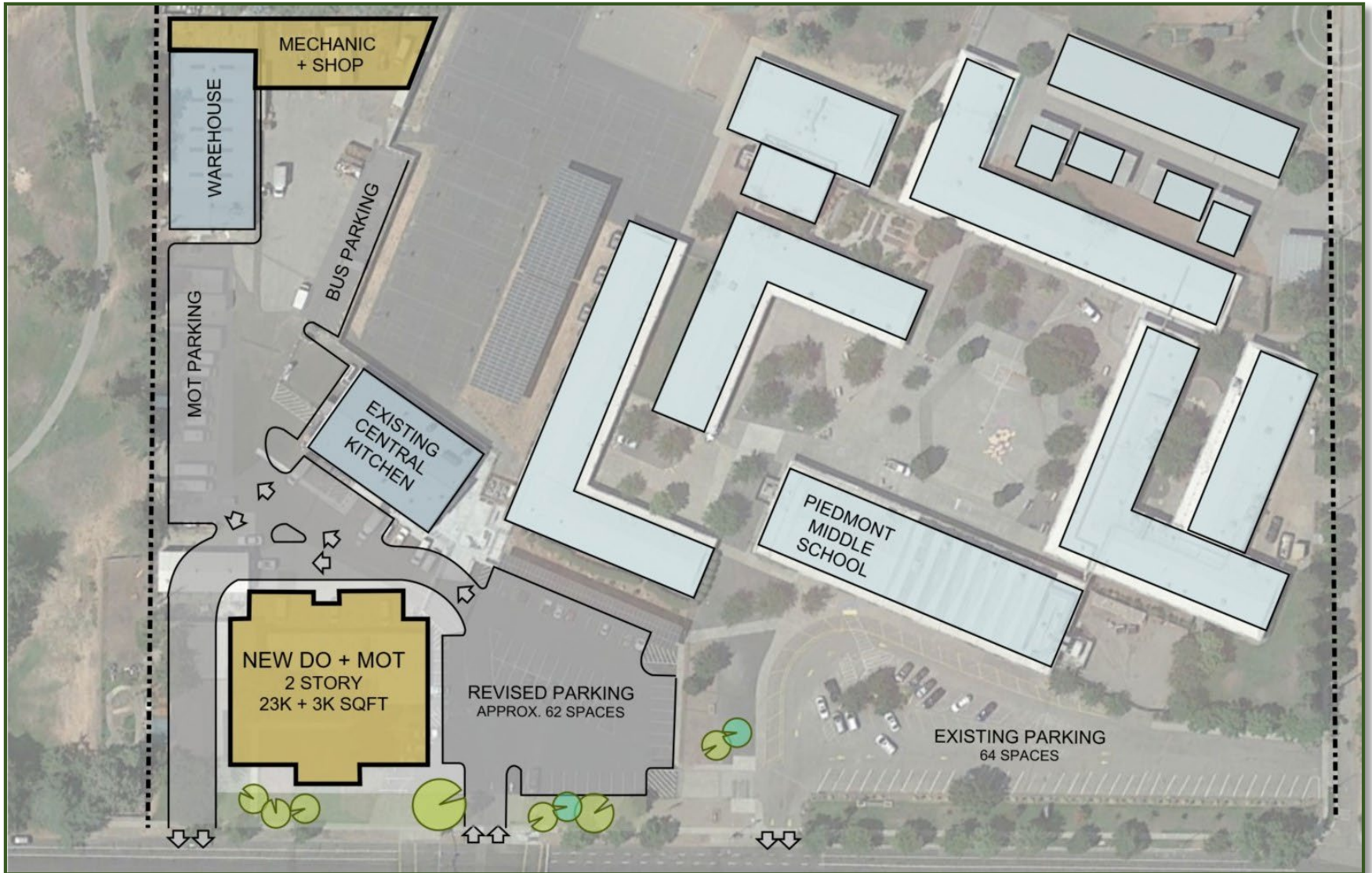
Measure U – Project Updates

OPTION C – New District/MOT Office on Existing MOT Site



Measure U – Project Updates

OPTION C – New District/MOT Office at Existing MOT Site



Measure U – Project Updates

OPTION C – New District/MOT Office at MOT Site

TOTAL PROJECT COSTS

Program Estimate

June 15, 2021

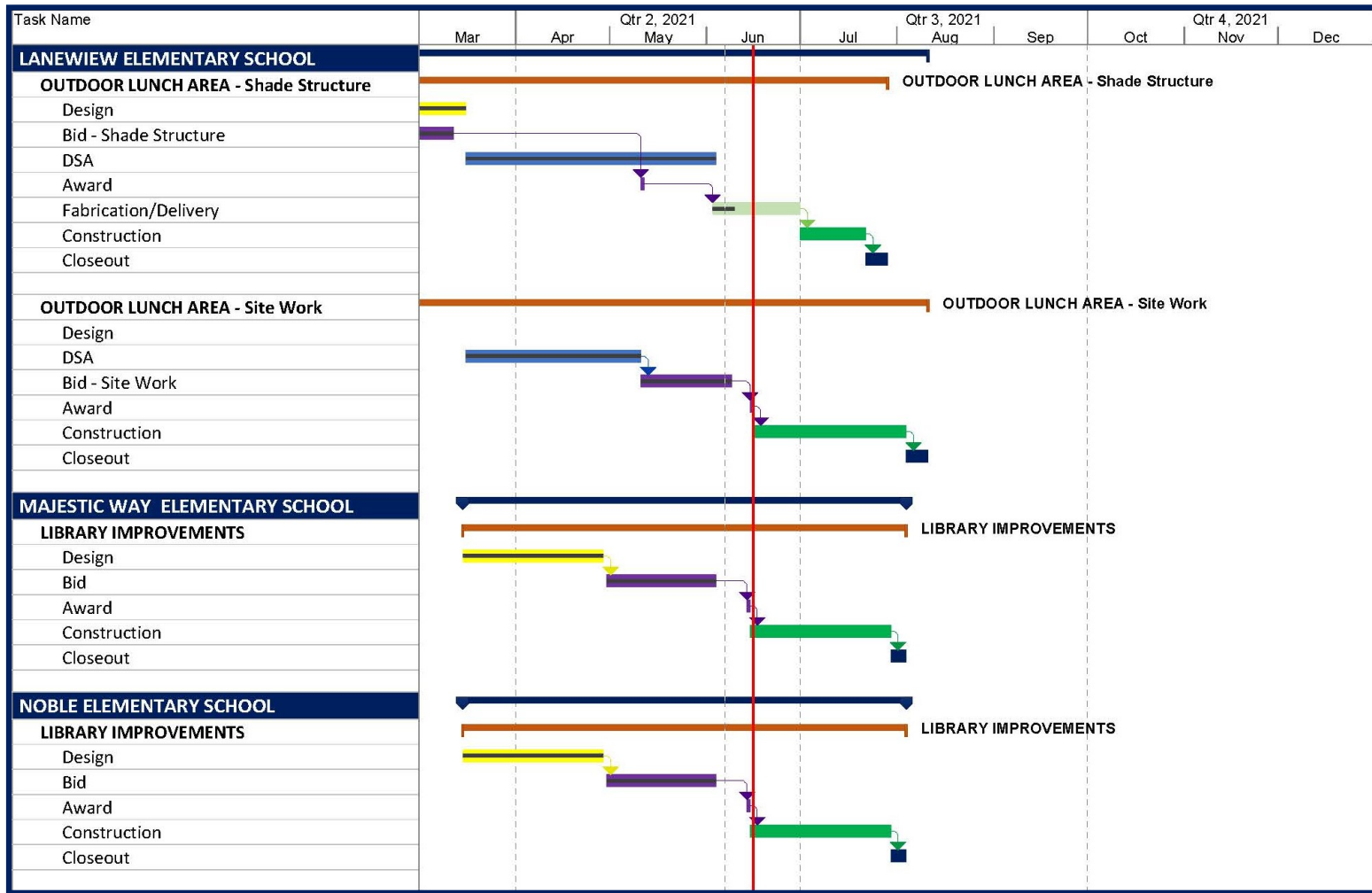
<i>Description</i>	<i>Qty</i>	<i>SF</i>	<i>Cost/SF</i>	<i>Total Cost</i>
Site Work				\$2,860,095
District Office/MOT Building	26,500	sf	\$558.90	\$14,810,850
Vehicle Repair/Shop Building	4,000	sf	\$97.85	\$391,400
Renovation of existing warehouse	4,000	sf	\$41.20	\$164,800
Total Construction Cost	34,500	sf	\$528.32	\$18,227,145
Change Order Contingency	5.00%			\$911,357.27
Interim Housing (MOT temporary moves off- site)				\$58,684
Soft Costs	26.00%			\$4,991,269
Moving				\$66,950
Furniture				\$283,250
Escalation (2 years @ 5% per year)	10.25%			\$2,515,212
Total Project Costs				\$27,053,868

Measure U – Project Updates

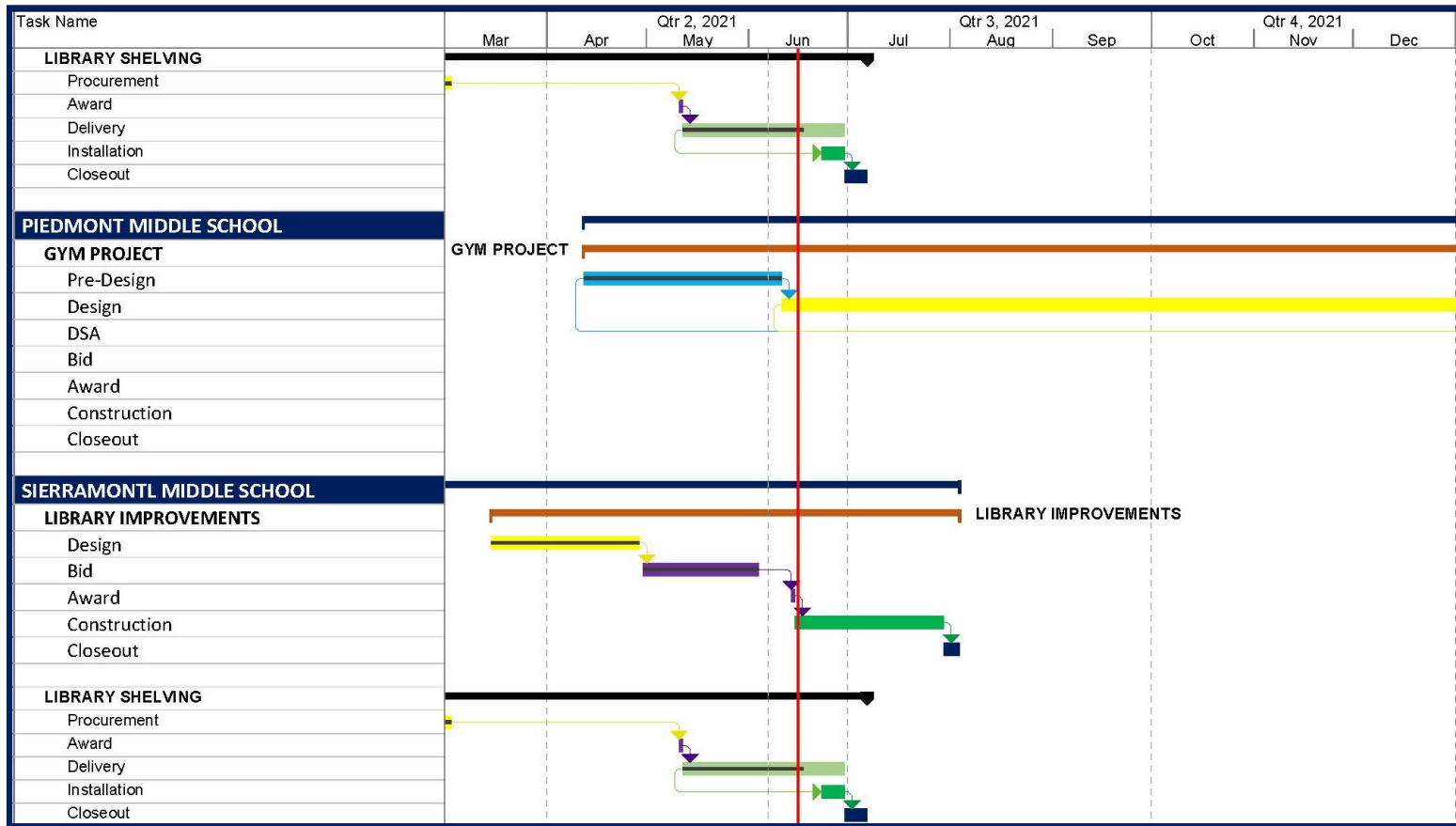
Cost Comparison of District Office Options

OPTION A	Renovation of Existing Office	\$ 14,927,844
OPTION B	New District Office on Existing Site	\$ 22,714,618
OPTION C	New District/MOT Office on Existing MOT Site	\$ 27,053,868

Measure U – Program Schedule



Measure U – Program Schedule





Questions